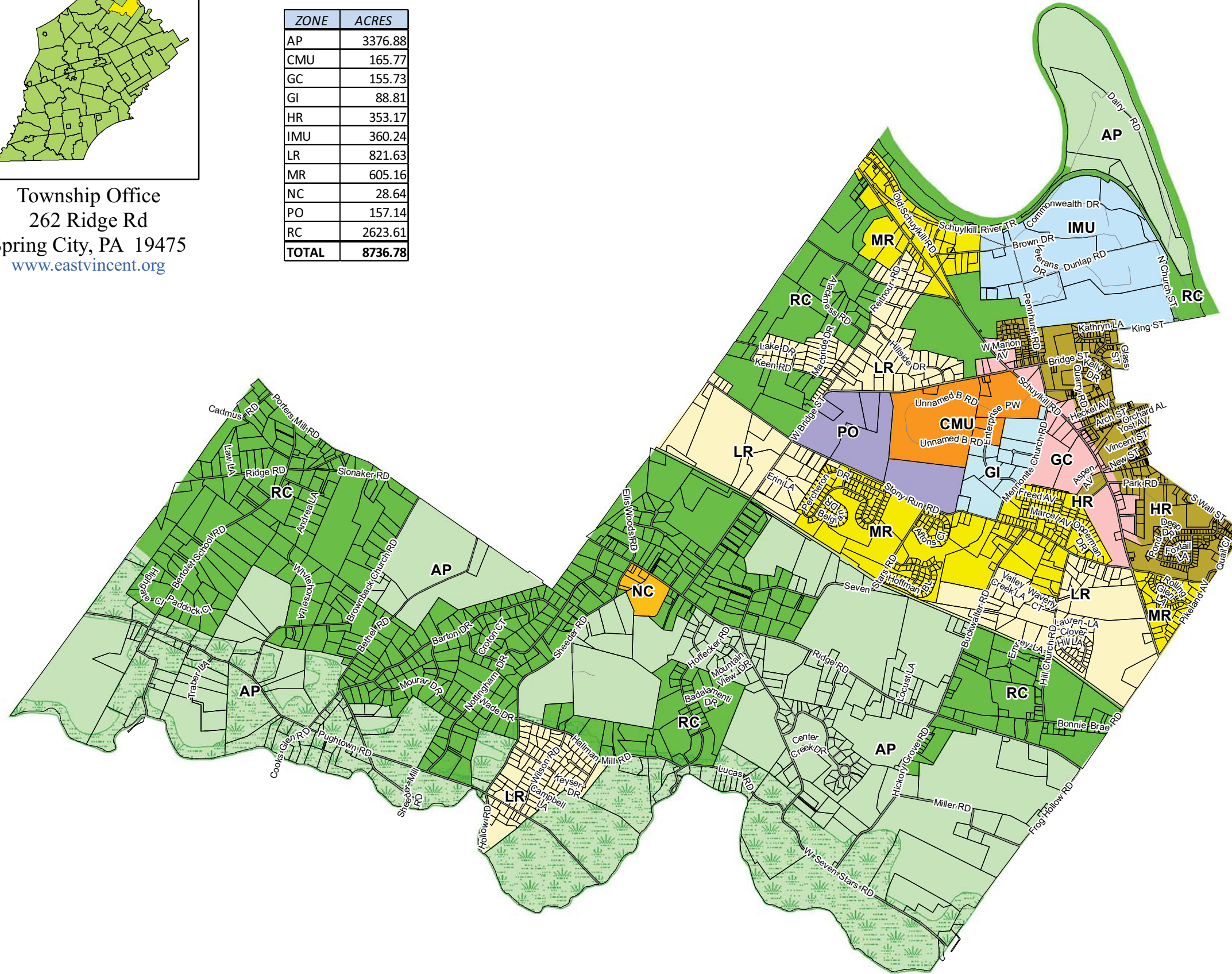


Township Office
 262 Ridge Rd
 Spring City, PA 19475
www.eastvincent.org

ZONE	ACRES
AP	3376.88
CMU	165.77
GC	155.73
GI	88.81
HR	353.17
IMU	360.24
LR	821.63
MR	605.16
NC	28.64
PO	157.14
RC	2623.61
TOTAL	8736.78



East Vincent Township

Municipal Zoning Map
 Zoning Adopted: July 24, 2012
 Map Created: July 31, 2012

Legend

- Roads
 - Parcels
 - French Creek Scenic Corridor Overlay
- ZONING DISTRICTS**
- AP - Agricultural Preservation
 - CMU - Commercial-Oriented Mixed Use
 - GC - General Commercial
 - GI - General Industrial
 - HR - High-Density Residential
 - IMU - Industrial Mixed Use
 - LR - Low-Density Residential
 - MR - Moderate-Density Residential
 - NC - Neighborhood Commercial
 - PO - Professional Office/Research
 - RC - Rural Conservation

IMPORTANT NOTICE:
 The Official Zoning Map in the municipal building shall be the final authority regarding the current zoning status of land, buildings, and other structures.

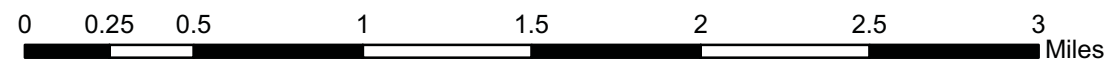
NOTES: Not for engineering purposes.

Landbase Source: Planimetric features have been compiled to meet the National Map Accuracy Standard of 1:24,000 scale mapping using first order, fully analytical digital stereoplotters, from aerial photography dated spring 2005, controlled analytically from ground points captured using first order GPS equipment. Planimetric coordinates were based on the PA State Plane Coordinate System South Zone and North American Datum 1983.

Copyright (c) 2009. County of Chester, PA. All Rights Reserved.

LIMITATION AND LIABILITY OF USE: This map was digitally compiled for internal maintenance and developmental use by the County of Chester, PA to provide index to parcels and for other reference purposes. Parcel lines do not represent actual field surveys of premises. County of Chester, PA makes no claims as to the completeness, accuracy or content of any data contained herein, and makes no representation of any kind, including, but not limited to, the warranties of merchantability or fitness for a particular use, nor are any such warranties to be implied or inferred, with respect to the information or data furnished herein.

No part of this document may be reproduced, stored in a retrieval system or transmitted in any form or by any means electronic, mechanical, photocopied, recorded or otherwise, except as expressly permitted by the County of Chester, PA.



1 inch = 3,000 feet

